

Real-Time Visibility and Control at Sea

- Any cargo type transported in a reefer container
- Two way communication and command control
- Remote temp changes to avoid damage and loss
- Access to Cargo Probe and Cold Treatment data

O ₃	Temp	RH	CO ₂	O ₂
264 ppb Setpoint: 250 ppb	8.2° C	99%	0.049%	20.6%
Last updated 10 minutes ago				

COLD CHAIN INTELLIGENCE

- Visibility to all atmospheric conditions within the reefer container
- On Trip Real Time Visibility
- Increased protection for high value shipments
- Door breach and G force notification will alert you to potential entrance into container or shock to better reduce risk of product tampering
- Real-time alarms and notification about relevant events
- Ability to correct problems in transit (temperature, atmosphere, shock)
- Detailed reports for post-trip documentation
- Intermodal Operations - ship/truck/rail
- Enhanced exception recognition and response
- Tighter control of remote logistics operations gives more confidence that product will arrive in good condition
- Increased flexibility for logistics optimization
- Available Cold Chain Control

Information is power, and with changing market dynamics and increased global pressures, the need for transparency throughout the shipping industry has reached a completely new level. Purfresh's cloud-based proprietary software, Intellipur®, provides never before available real-time visibility into and control over the conditions of your cargo shipped in refrigerated marine containers around the world.

Offering growers, manufacturers, importers/exporters, ocean carriers, and retailers the competitive advantage, Intellipur provides role-based real-time atmospheric conditions inside the reefer, location data, automatic alerts, and detailed trip reports. Available as a per-trip or contracted service, everyone – from the grower/manufacturer to the consumer – benefits from augmented transparency, fewer losses, and higher-quality arrivals.

REAL-TIME MONITORING

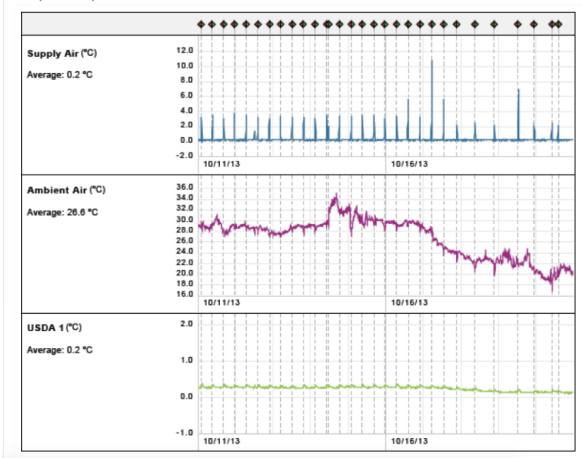
Real-time monitoring provides the ability to minimize cargo damage by taking corrective action while the reefer is at sea or in port. Throughout the trip, satellite and/or GSM signals are sent from the

Purfresh panel to Purfresh's 24/7 data center, every 10 minutes. When unexpected conditions occur, users automatically receive an alert sent to their computer or smart phone. Real-time monitoring reduces damage and loss by allowing Purfresh to resolve damaging conditions such as incorrect vent settings, unplanned power-off events and/or incorrect temperature settings to prevent cargo integrity from being compromised.

POST-VOYAGE DATA AND ALERTS

Comprehensive post-voyage reports provide valuable information about the container's atmospheric conditions during the trip including temperature, humidity, ozone levels, and respiration.

Intellipur Data Report





ADDED BENEFITS FOR YOUR INVESTMENTS

- Near real-time monitoring and alerts on logistical and environmental conditions during shipping including:
 - Temperature
 - Door Breach
 - Carbon Dioxide
 - Relative Humidity
- Detailed post trip reports of logistical and environmental conditions.
- Optional pulp temperature data for cold treatment requirements.
- Ability to alter set points during transit.



In addition, trip reports highlight exactly when and where power-off events occurred, offering additional insight into the voyage.



Email and smart phone notifications are provided for the following events:

- Sensor above threshold; includes temperature, relative humidity (RH), oxygen (O₂), and carbon dioxide (CO₂)
- Power-off events >1 hr
- Geofence entry/exit

Trip Reports

Post-voyage reports on container settings allow shippers to verify the condition and quality of the shipment

upon arrival, and offer insight into produce ripening through CO₂ levels.

Reports include:

- Sensor values, in 10-minute increments, for temperature, relative humidity (RH), oxygen (O₂), and carbon dioxide (CO₂)
- Power-off events >1 hour
- Travel path via GPS coordinates
- Port departure and arrival time stamps
- Number of defrost events and duration

EASE OF USE

Purfresh provides hardware and software to manage intermodal container environments and the Intellipur software solution to provide near real time visibility and reporting of atmospheric conditions within the intermodal cold chain. Included in these capabilities is the ability to monitor temperature data from cold treatment probes remotely via GSM and satellite, as well as remotely download this data and electronically present the required formatted report for validation by import government agricultural authorities, in advance of vessel arrival at the destination port.

